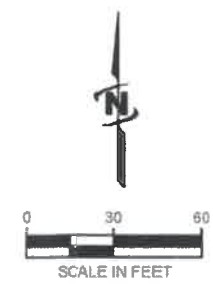
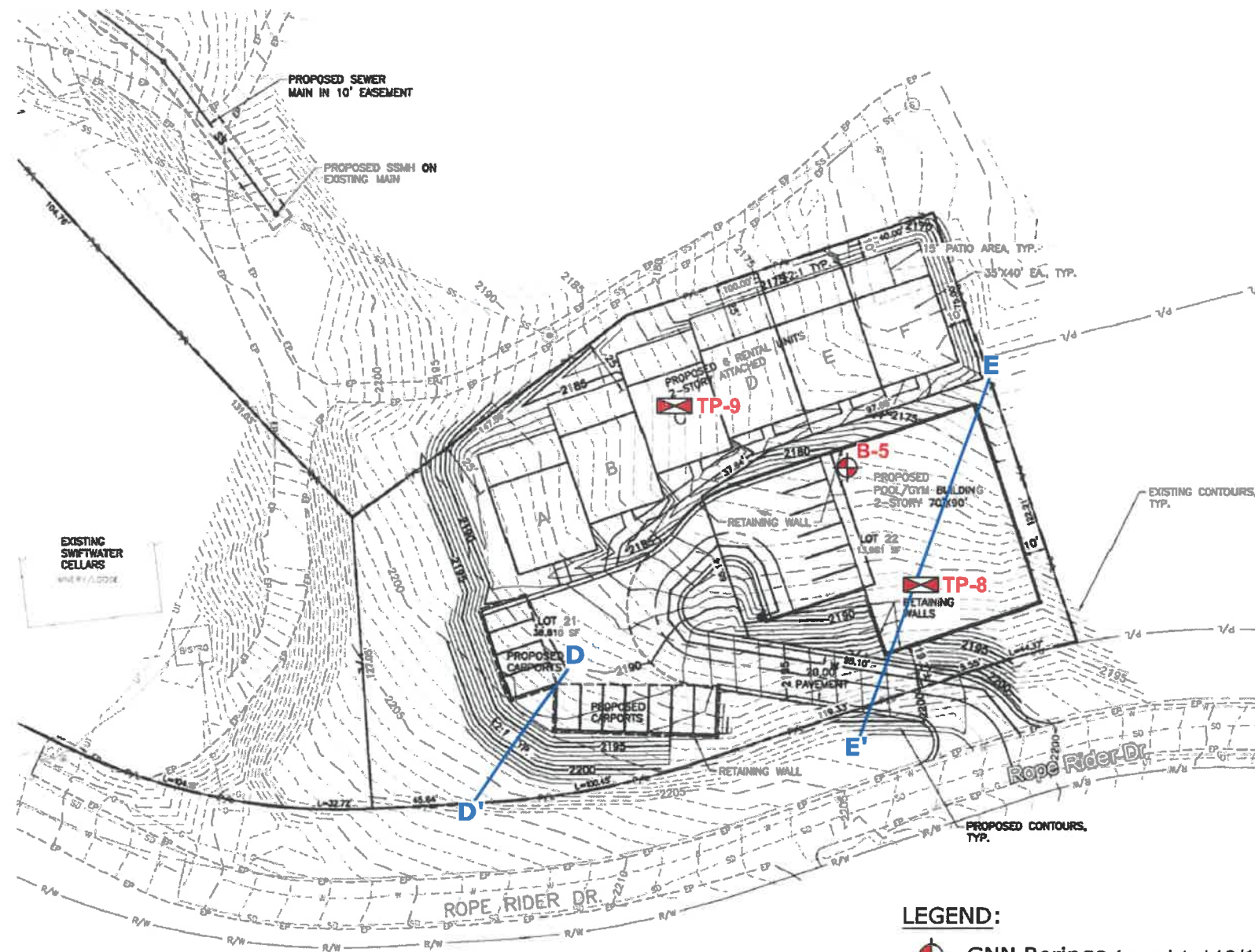





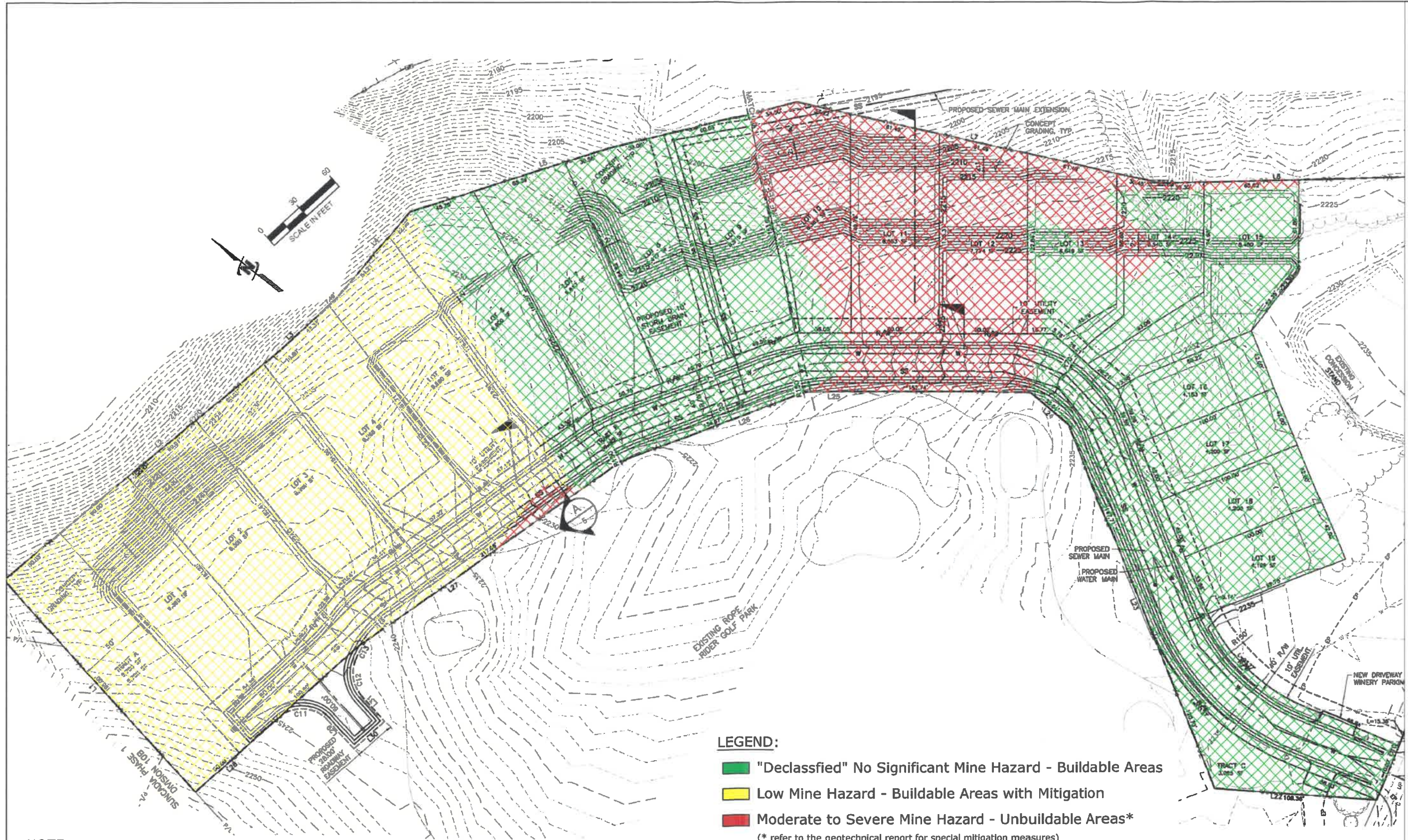
- LEGEND:**
- GNN Borings (completed 10/10/2017 to 10/12/2017)
 - GNN Test-Pits (completed 10/3/2017)
 - ICE Borings (completed 2004 to 2006)
 - Slope Stability Section Line

NOTE:
 Combined base maps extracted from *Preliminary Utilities and Grading plans* (Sheets 2 & 3) prepared by JUB Engineers, Inc. dated 8/1/2017.



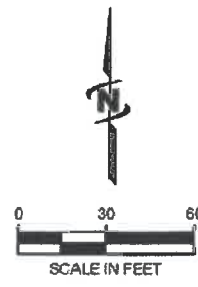
- LEGEND:**
-  GNN Borings (completed 10/12/2017)
 -  GNN Test-Pits (completed 10/3/2017)
 -  Slope Stability Section Lines

NOTE:
 Base map extracted from *Preliminary Utilities and Grading plan* (Sheet 4) prepared by JUB Engineers, Inc. dated 7/27/2017.



NOTE:
 Combined base maps extracted from *Preliminary Utilities and Grading* plans (Sheets 2 & 3) prepared by JUB Engineers, Inc. dated 8/1/2017.

- LEGEND:**
- "Declassified" No Significant Mine Hazard - Buildable Areas
 - Low Mine Hazard - Buildable Areas with Mitigation
 - Moderate to Severe Mine Hazard - Unbuildable Areas*
 (* refer to the geotechnical report for special mitigation measures)



- LEGEND:**
- "Declassified" No Significant Mine Hazard - Buildable Areas
 - Moderate to Severe Mine Hazard - Unbuildable Areas*
(* refer to the geotechnical report for special mitigation measures)

NOTE:
Base map extracted from *Preliminary Utilities and Grading plan* (Sheet 4) prepared by JUB Engineers, Inc. dated 7/27/2017.